

Mark West Area Chamber of Commerce and VISITORS CENTER



BRINGING BUSINESS & THE COMMUNITY TOGETHER!

4787 Old Redwood Highway, Suite 101, Santa Rosa, CA 95403
Office Hours: Mon - Thurs 10am - 3pm www.markwest.org

707.578.7975
office@markwest.org

The Lark

April 2011
Volume XXV Issue 4

BUSINESS ENVIRONMENTAL ALLIANCE'S BEST PRACTICES AWARD PRESENTED TO CHAMBER HONOREE CLONE DIGITAL PRINT & COPY



Cameron Scott Kirk, Chairman of the BEA Steering Committee, Supervisor Shirlee Zane presents the Best Practice Award to Ellen Zalman-Rai of Clone Digital Print & Copy.



Chamber members recognized Ellen Zalman-Rai and Surendra Rai of Clone Digital Print & Copy. Kathleen Palmer, Sonoma CONNECTION, Anthony Gerald, Airport Express, Ellen Zalman-Rai, Surendra Rai, Will Brodt, Promos Oncall, Jerry Hankins, Internet Sales (not pictured Elaine B. Holtz, Pre-Paid Legal Services, Norton & Holtz, John Essman, Sonoma CONNECTION)

WINE COUNTRY HARVEST FAIRE & BUSINESS SHOWCASE

JOIN US ON **WEDNESDAY, OCTOBER 5 4:00 - 8:00 PM**
Wells Fargo Center for the Arts, 50 Mark West Springs Road, Santa Rosa, CA



DISCOUNT EXTENDED TO 4/15!

Purchase Your Tradeshow Booth Online NOW:
<http://www.markwest.org>

Member's Price:

4' Table= ~~\$250~~ **\$200**

8' Table= ~~\$350~~ **\$280**

As an early participant YOU get first pick of booth locations, mention of YOUR BUSINESS in The LARK and on our website. Sign up NOW!

Support Your Chamber = Support Your Community!



SAVE 20%

On your Tradeshow Booth paid by April 15

SHOW SPONSORSHIPS AVAILABLE!



March Social hosts - new member The Cove & the MWCS D page 3

UPCOMING EVENTS:

next **AFTER HOURS BUSINESS SOCIAL** hosted by **AUTOBAHN - ANYTHING DETAILING**
1675 Piner Rd., Suite B

Thursday, April 14
5:30 pm - 7:30 pm

next **RIBBON CUTTING**
ANYTIME FITNESS
490 Larkfield Center

Saturday, April 30
11:00 am

BILL'S LAWNMOWER SALES & SERVICE
5519 Old Redwood Hwy.

Wed., May 4
12:00 pm



Will Brodt
President

PRESIDENT'S MESSAGE:

Wow, Time flies! Easter is upon us and daylight savings time is here. Don't you love having those extra daylight hours to goof around doing the things you love?

Did you have a good quarter? My hope for you is an awesome quarter. Now is a great time to reevaluate your goals as we head into the 2nd quarter of 2011. The Chamber's goal is to increase our membership, and the membership drive **"Get One, Get er Done"** is in full swing. Help the Chamber and yourself by referring a few friends to become members. Let your guests see for themselves how fun it is to network with other business owners and professionals at the "fun chamber", the Mark West Area Chamber of Commerce and Visitors Center. Invite them to be your guest at the Business After Hours Social on Thursday, April 14, 5:30- 7:30pm hosted by Max McDonald at Autobahn – Anything Detailing, 1675 Piner Rd. "They Take Pride in Your Ride". This month the Pot of Gold is up to \$260.00. Someone is going to be really happy. But you have to be there to win!

Have a great month!

Cheers, Will Brodt

PS: It is clearly not the journey for everyone. People succeed in as many ways as there are people. Some can be completely fulfilled with destinations that are much closer to home and more comfortable. But if you long to keep going, then I hope you are able to follow my lead to the places I have gone. To within a whisper of your own personal perfection. To places that are sweeter because you worked so hard to arrive there. To places at the very edge of your dreams. - Michael Johnson

*Our Mission:
The Mark West Area Chamber of Commerce is organized to advance the economic well-being and uniqueness of the Mark West Area so that its citizens and all areas of its business community shall prosper.*

The next Board of Director's meeting is April 12 at Grace Fellowship 608 Larkfield Center 11:30 am - 1:00 pm

Want to keep abreast of important information pertinent to local business issues?

Visit:
sonoma-county.org/edb

April is Child Abuse Prevention Month

Each year an estimate of 10,000 calls/reports of suspected child abuse and/or neglect are made to Sonoma County Child Protective Services' child abuse hotline. Please see info on page 5 Community Events

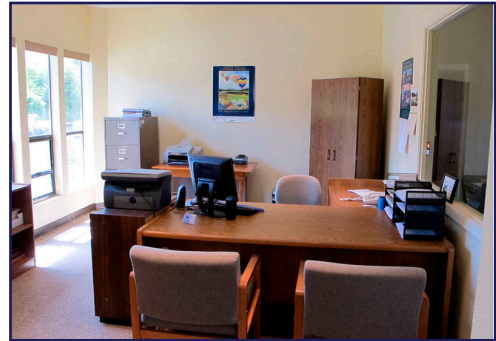
OFFICE SPACE AVAILABLE NOW!

We have office space available in the Chamber building on Old Redwood Hwy, across from Larkfield Center

Single OR Double Office in prime Mark West Chamber building on Old Redwood Hwy across from Larkfield Center 500+ sq. ft.

Use of Conference Room
High Speed Access available
Kitchenette - Waiting Area
Ample Parking

Contact Daryl at 546-8000 or email office@markest.org



Serving the Wine Country Since 1979

- Project Planning
- Land Surveying
- Civil Engineering
- Wastewater Specialists

LESCURE
ENGINEERS, INC.
(707) 575-3427

www.lescore-engineers.com



Serving Sonoma County Since 1959
Family Owned and Operated
We offer more to our shoppers.
Stop by our Gourmet Cheese Counter and Sample Imported and Domestic Cheese
522 Larkfield Center, Santa Rosa
707/546-0307

**NEW MEMBERS INTRODUCED AT MARCH SOCIAL
CO-HOSTED BY THE COVE & MARK WEST AREA
COMMUNITY SERVICES COMMITTEE**

March's Business After Hours Social was co-hosted by The Cove & the Mark West Area Community Services Committee at 5146 Old Redwood Hwy.

Members of The Cove's congregation joined Chamber and community members who are interested in the upcoming election to vote on approval of a Mark West Area Community Services District. We were treated to tasty local wines and a delicious light dinner.

Jeff Johnson, pastor of The Cove, described the church's activities and the onsite school for our website: "In the heart of Wikiup, a new church has arrived: The Cove. It's a young church with a casual atmosphere, kid-friendly, and features music by the Krystle Locey band. Rev. Jeff Johnson planted the church 10 years and 3 locations ago, but now they're here to stay. Kirsten Carpenter is the Director of Children's Ministries. Sunday service is at 10:30. Youth group meets Sunday nights 6:30-8pm. There are other groups and ministries for all ages, including Presbyterian Charities, which operates a food pantry through the church." Welcome to the Chamber!

Peter Lescure of Lescure Engineers, and member of the MWCSC, explained how the community will benefit from a local services district, which will be on the ballot in the upcoming November election. Visit markwestcsd.org for more information and a map of the proposed district.

In his "2 Minute Showcase", Jerry Hankins, Internet Sales explained the online store KaChing KaChing which offers commissions on all your purchases.

The business drawn for the Pot of Gold was Wally Coppock, Attorney at Law. Wally Coppock was unfortunately unable to attend the March social. The Pot of Gold payout at the April social hosted by AutoBahn - Anything Detailing will now be increased to \$260.00. A member of your business must attend the social to win!

The 50 / 50 raffle of \$102.00 was won by Craig Curreri of Coldwell Banker. Prizes for our business card drawing were donated by The Cove, Heather McConnell, Landscape Artist, Sonoma County Airport Express, and Eichler's Auto & Truck Repair. Winners drawn included Katherine Phillips, Key Properties Will Brodt, Promos Oncall, DP Logan, Logan II Investigations, Steve Plamann, Aaction Rents, Roger Olson, Pacific Coast Air Museum, John Essman, Sonoma CONNECTION, Jim Bajgrowicz, Consultant, Jeanne Haddorff, Healthy Are We.

Congratulations to all of our winners and thank you to the businesses donating prizes. A very big thank you to Jeff Johnson, pastor of The Cove, and their many supporters, and the members of the the Mark West Area Community Services Committee.

contributed by Kathleen Palmer, Ambassador

**MARCH
BUSINESS AFTER
HOURS SOCIAL**



*Jeff Johnson, The Cove,
Kim Anderson, Head Ambassador*



*Demerus & Peter Lescure,
Lescure Engineers/MWCSD,
Laura Buhrer, Exchange Bank*



*Anthony Gerald, Airport Express,
Craig Curreri, Coldwell Banker*



*Jerry Hankins, Internet Sales
Cody Morrison, Cellularworld*



*John Essman, Sonoma
CONNECTION, won a
painting donated by Heather
McConnell, Landscape Artist*



*Jeanne Haddorff, left, Healthy
Are We, won a tv donated by
Eichler's Auto & Truck Repair:
Tom Eichler, Erin Schreiner &
Sally*



*Brett Livingstone, Anytime
Fitness, Cathy Kurt, guest*



*Brian Molsberry, Molsberry
Markets, with guests Margaret
and Steve Bair, of The Cove*

*Photos by Sonoma
CONNECTION
More photos MarkWest.org
SOCIALS
see schedule on page 5*

BEA BEST PRACTICES AWARD: AACTION RENTS

Chamber member Aaction Rents was recognized with a BEA Best Practices Award by the Windsor Chamber.

Gary Quakenbush, Windsor Chamber, Mark Grill, Steve Plamann, Aaction Rents



RIBBON CUTTING: HEALTHY ARE WE



Interested in joining our Ambassador Club? Contact Kim Anderson Assets Insurance 546-8020 assetsinsurance@gmail.com



Kathleen Palmer, Sonoma CONNECTION, Aggie Maggio, Coldwell Banker, Jeanne Haddorff, Healthy Are We, Jim Bajgrowicz, Consultant, Daryl Anderson, Wikiup Properties, guest, Jerry Hankins, Internet Sales, Kimberlee Anderson, Assets Insurance, Jay Messick, Computers Can Work, Will Brodt, Promos Oncall

The Mark West Chamber of Commerce and Visitors Center supported member Jeanne Marie Haddorff of Healthy Are We with a ribbon cutting.

“I just love being a “Shaklee” distributor,” said Jeanne Marie Haddorff. “I get great satisfaction in helping people sustain and improve their health physically and environmentally.”

Shaklee is a 55 year old company that is built on trust and products that work. They are number one in nutrition in the United States and their food supplements alone undergo 176 tests for raw ingredient purity, freshness, potency and safety.

Jeanne Marie Haddorff offers Shaklee products that give people an opportunity to use cleaning & laundry products that are non-toxic, concentrated & biodegradable. Being environmentally friendly and green, the “Get Clean Line” has built a reputation of safety and health. The “Basic H” Organic Super Cleaning Concentrate has hundreds of uses & has been around since 1960.

Ms. Haddorff also offers a weight loss program with “Cinch Inch Loss” products that are safe, effective and contain an amino acid that benefits losing inches and fat, while retaining muscle at the same time.

Another popular product is Vivix, a cellular anti-aging product. Vivix supports the heart, brain, immune system, joints, and increases cellular energy, good health and well being.

For more information, please call Jeanne Marie Haddorff (707) 528-0378 or (707) 228-5582 or visit her web site at <http://www.healthyarewe.myshaklee.com>

RENEWALS:

- Larkfield Body & Paint 1987**
- Andre’ M. Andrus Electrical 2007**
- Sonic.Net, Inc. 2007**
- Hilton Garden Inn 2008**
- State Farm Insurance 2008**
- Katherine Navarro Wong**
- Hunter Prestige Properties 2009**
- Vintners Inn 2009**
- Bear Republic 2010**
- Brewing Co., Inc.**
- Weinstein Security, Inc. 2010**

Thank You!

UPCOMING BUSINESS SOCIALS

Thursday, April 14 5:30-7:30pm
 Hosted by **AutoBahn - Anything Detailing**
 Location: 1675 Piner Rd., Suite B, Santa Rosa

Thursday, May 12 5:30-7:30pm
 Hosted by **Wikiup Tennis & Swim Club**
 Location: 500 Wikiup Drive, Santa Rosa

Thursday, June 9 5:30-7:30pm
 Hosted by **Chancellor Place of Windsor**
 Location: 907 Adele Drive, Windsor

Thursday, July 14 5:30-7:30pm
 Hosted by **Mike McGuire, 4th District Supervisor**
 Location: TBD

Thursday, August 11 5:30-7:30pm
 Hosted by **Cloverleaf Ranch**
 Location: 3892 Old Redwood Hwy., Santa Rosa

Thursday, September 8 5:30-7:30pm
 Hosted by **California American Water**
 Location: TBD

Thursday, October 13 5:30-7:30pm
 Hosted by **Anytime Fitness**
 Location: 490 Larkfield Center, Santa Rosa

Thursday, November 8 5:30-7:30pm
 Hosted by **Extended Child Care Coalition**
 Location: TBD

Thursday, December 8 5:30-7:30pm
 Hosted by **Molsberry Markets, Inc. & Exchange Bank**
 Location: 500 Larkfield Center, Santa Rosa

Sign Up NOW for 2012 Socials - your pick of dates!

If you are a member interested in hosting a Business After Hours Social, please contact Kimberlee Anderson, 546-8020, email assetsinsurance@gmail.com, or visit our Calendar of Events page at markwest.org.

WINE COUNTRY HARVEST FAIRE & BUSINESS SHOWCASE

Wednesday, October 5 4 - 8 pm
 Hosted by **60+ Local Businesses**
 Location: Wells Fargo Center for the Arts
 50 Mark West Springs Road Santa Rosa
Apply NOW for 20% Savings!



HOLIDAY TREE LIGHTING

Wednesday, December 7 6:00-7:00pm
 Hosted by the **Mark West Area Chamber**
 Location: Larkfield Center in front of Molsberrys Market

COMMUNITY EVENTS

Each year an estimate of 10,000 calls/reports of suspected child abuse and/or neglect are made to Sonoma County Child Protective Services' child abuse hotline. In Sonoma County in 2009, 2,623 reports of child abuse were serious enough to require a face-to-face investigation to determine if allegations of abuse were substantiated, and 196 children were removed from unsafe and abusive homes.

April is Child Abuse Prevention Month - our local council, Prevent Child Abuse-Sonoma County, hosts a series of awareness events to recognize the importance of child abuse prevention. To find out how you can help please call Prevent Child Abuse-Sonoma County at (707) 585-6108 x101 or visit www.preventchildabuse-sonomacounty.org

RIBBON CUTTINGS

Saturday, April 30 11:00am
 Hosted by **Anytime Fitness**
 Location: 490 Larkfield Center, Santa Rosa

Wednesday, May 4 12:00pm
 Hosted by **Bills Lawnmower Sales & Service**
 Location: 5519 Old Redwood Hwy., Santa Rosa

CHAMBER MEETINGS

Tuesday, April 12
Board of Directors
 11:30am - 1:00pm
 Grace Fellowship

Thursday, April 14
Ambassadors
 4:00pm - 5:00pm
 Chamber Office

Saving Water Saves Money

www.californiaamwater.com • (888) 237-1333

www.amwater.com

Sonoma CONNECTION
 John Essman
 Kathleen Palmer
 P O Box 1381
 Healdsburg, CA 95448
 (707) 433-8774
info@sonomaconnection.com
www.sonomaconnection.com

Web Site Design • Search Engine Optimization
 Digital Photography • Photoshop • Graphic Design

www.sonomaconnection.com

**RIBBON CUTTING:
COMPUTERS
CAN WORK**



Jeanne Haddorff, Healthy Are We, Kimberlee Anderson, Assets Insurance, Jay Messick, Computers Can Work, Will Brodt, Promos Oncall, Aggie Maggio, Coldwell Banker, Jim Bajgrowicz, guest, Consultant, Jerry Hankins, Internet Sales, Kathleen Palmer, Sonoma CONNECTION, Daryl Anderson, Wikiup Properties

The Mark West Chamber of Commerce and Visitors Center supported member Jay Messick of Computers Can Work with a ribbon cutting.

Computers Can Work specializes in home & small business PC & Windows repair, maintenance, and anti-virus protection. Virus problems, wireless configuration, printer setup, new computer shopping assistance, Windows training for the inexperienced or computer-phobic, hardware and software upgrades.

Contact Jay at (707) 321-3211 Email: help@computerscanwork.com
Website: www.computerscanwork.com

OUTLOOK FOR LOCAL FINANCIAL, REAL ESTATE, AND INSURANCE SECTORS:

GOOD NEWS!

A new annual forecast has been published by the Sonoma County EDB. It's peppered with some bright notes, including:

- Job losses have finally eased in formerly hard-hit industries such as construction, reflecting overall improvement in the labor market from the depths of the recession.
- Consumer credit conditions are improving. Delinquency rates for all types of credit remain below the state level, although mortgage delinquencies remain at elevated levels.
- The pace of economic recovery in Sonoma County and the U.S. will be assisted by strong growth in developing Asia in 2011 and 2012.
- Stronger job growth in office-using industries will help to lower office vacancies in 2011. The vacancy rate will fall below 20% by 2012 as Sonoma County transitions into a full economic expansion.

To view the full report please use this link:

http://www.sonoma-county.org/edb/pdf/2011/financial_realestate_creative_2011.pdf
contributed by Ben Stone, Economic Development Board

Serving North America's Families since 1972 PFD NYSE

PRE-PAID LEGAL SERVICES, INC.
AND SUBSIDIARIES

Elaine B. Holtz
Independent Associate/Director
Small Business & Group Benefits Specialist

Santa Rosa, CA
Office 707-527-5987
Toll Free 877-244-2019
elaine@nortonholtz.com
www.nortonholtz.com

Identity Theft SHIELD

LARKFIELD
Body & Paint

David Hartman

15 Lark Center Drive
Santa Rosa, CA 95403

707-546-5717
FAX 707-546-0902

MARK WEST AREA COMMUNITY INFORMATION

AREA POPULATION - within a 3 mile radius - 20,000
 ELEVATION - 160 feet above sea level
 BOUNDARIES - Area approximately bounded by:
 Shiloh Road - North Piner Road - South
 West Olivet Road - West Lodge on Mark West Springs Rd - East

The Lark Newsletter is published monthly under the direction of:
 The Mark West Area Chamber of Commerce & Visitors Center
 4787 Old Redwood Hiwy, Suite 101, Santa Rosa, CA 95403

ADVERTISING: 6 months \$107.50; 1 year \$200
 FLYER INSERTION: \$35 per issue.
 You supply a pdf version of your 8.5" x 11" flyer to info@markwest.org
 You can pay online @ <http://markwest.org/payment/>

The Lark Newsletter is emailed to member businesses each month.
 For more information, contact the Chamber Office at 578-7975.

Editors: Kathleen Palmer & John Essman (707) 433-8774
 Sonoma CONNECTION info@sonomaconnection.com

Deadline for publication is the 3rd Wednesday of the month.
 Please email your materials to info@markwest.org

*Promote your business with
 your flyer in the Chamber newsletter.
 You supply the flyers - We do the work!*

CHAMBER MEMBERSHIP DUES
Effective May 1, 2006

Standard Dues		Non-Profit Dues
\$125.00	Business (1-5 Personnel)	\$110.00
\$175.00	Business (6-10 Personnel)	\$155.00
\$245.00	Business (11+ Personnel)	\$215.00
\$625.00	Corporate Sponsor	
\$ 95.00	Individual (no business affiliation)	

You can pay online @ <http://markwest.org/payment/>

YOUR AD HERE!

6 months \$107.50

1 year \$200

OFFICERS

President, VP Public Relations
 Will Brodt Promos Oncall
 539-5133 will@grafixoncall.com

President-Elect
 Brian Molsberry Molsberry Markets, Inc.
 546-5041 Molsberry522@sbcglobal.net

Past President
 James Bajgrowicz Office of James Bajgrowicz
 235-9774 jimabajgrowicz@gmail.com

Corporate Secretary
 Susan Lindstrom Guardian Caregiver Connections
 328-2588 guardiangivers@gmail.com

Corporate Treasurer
 John Essman Sonoma CONNECTION
 433-8774 john@sonomaconnection.com

VP Membership
 Anthony Geraldi SC Airport Express
 837-8700 tony@airportexpressinc.com

VP Business Services
 Elaine B. Holtz Pre-Paid Legal, Norton & Holtz
 579-5319 elaine@nortonholtz.com

VP Community Services
 Patricia Dearmin 539-4945

DIRECTORS

Laura Buhner Exchange Bank/Larkfield
 524-3077 buhnerl@exchangebank.com

Shawna DeGrange Cloverleaf Ranch
 545-5906 cloverleaf ranch@hotmail.com

Stephanie Munson Goodwill Industries
 523-0550 ext. 213 smunson@gire.org

Sue Sloat Mark West Union School District
 524-2970 ssloat@mwusd.org

Doug Williams Rincon Valley Fire District
 539-1801 dwilliams@rvfire.org

HEAD AMBASSADOR

Kimberlee Anderson Assets Insurance
 546-8020 assetsinsurance@gmail.com

PUBLICITY

Evan Jacobs Cal-American Water Co.
 542-8329 Evan.Jacobs@amwater.com

CONSULTANT

Daryl Anderson Wikiup Properties
 546-8000 andybaum@comcast.net

OFFICE VOLUNTEERS

Patricia Dearmin Jim Bajgrowicz
 578-7975 office@markwest.org

Mark West Area Chamber of Commerce and VISITORS CENTER



4787 Old Redwood Hwy, Suite 101
Santa Rosa, CA 95403

AFTER HOURS BUSINESS SOCIAL

Thursday, Apr 14
5:30- 7:30pm

Hosted by
**AUTOBAHN
- ANYTHING
DETAILING**
1675 Piner Rd., Suite B

BRINGING BUSINESS & THE COMMUNITY TOGETHER!

Thank you to our 21st Annual Harvest Faire & Business Showcase Vendors & Participants!

MORE PHOTOS NEXT MONTH!



KA Chinese Restaurant

Kiwanis Club

Mark West Community Services District

Real Goods Solar

Redwood Empire Disposal

Thank You to Our Corporate Sponsors!



March 26, 2011

To All Members:

As required by the Chamber By Laws, the President appointed a nominating committee of three Directors who have nominated a slate of candidates to fill expiring Board of Directors positions. Each candidate will fill a two-year term and needs to be an active member. The slate of recommended candidates is as follows:

HOLD OVERS

Member / Business	Term
Doug Williams, Rincon Valley Fire District	2010 - 2012
Laura Buhner, Exchange Bank, Larkfield Branch	2010 - 2012
John Essman, Sonoma Connection	2010 - 2012
Shawna De Grange, Cloverleaf Ranch	2010 - 2012
Susan Lindstrom, Guardian Caregivers	2010 - 2012
Brian Molsberry, Molsberry Market	2010 - 2012

TO BE ELECTED

Jim Bajgrowicz	2011 - 2013
Elaine Holtz, Prepaid Legal, Norton & Holtz	2011 - 2013
Sue Sloat, Mark West Union School District	2011 - 2013
Stephanie Munson, Goodwill Industries	2011 - 2013
Pat Dearmin	2011 - 2013

Right of Petition:

Additional qualified candidates may be nominated by petition, which must bear the signatures of at least ten (10) active members. Such petitions shall be filed with the judging committee by May 11, 2011. The determination of the nominating committee as to the legality of the petitions shall be supervised by the judging committee. Petitions should be mailed to the Chamber office at the address indicated below.

If no petition is filed within the designated period, the nominations will be closed, and the slate of candidates shall be elected at the regular June Board of Directors Meeting. If one or more petitions are received with additional candidates, the names of all candidates will be presented on a ballot in alphabetical order and, with instructions for voting for the correct number, shall be mailed to all active members. The ballots must be returned to the Mark West Area Chamber of Commerce, 4787 Old Redwood Highway, Santa Rosa, CA 95403, no later than 3 pm, May 28, 2011. The Board of Directors will declare the candidates with the greatest number of votes elected at the June Board of Directors meeting.

Sincerely,
Mark West Area Chamber of Commerce

22nd Annual Wine Country Harvest Faire Business Showcase & Silent Auction



Wednesday, October 5, 2011 4 – 8 PM

presented by the
Mark West
Area Chamber
of Commerce &
Visitors Center



Exhibits, Entertainment, Networking

FUN, FOOD & WINE

Please call the Chamber at 578-7975 or
visit www.MarkWest.org to participate.

Join us at the



**WELLS FARGO
CENTER FOR
THE ARTS**

Company _____
Contact _____
Address _____
City/State/ZIP _____
Phone/FAX _____
Email _____

	Members	Non-Members
4' Table	\$200 \$250	\$300 \$375*
8' Table	\$280 \$350	\$380 \$475*

- Check payable to: Mark West Chamber
 Pay Online: MarkWest.org
 Please charge my VISA/MASTERCARD

20% discount when payment is
received by April 15, 2011

(* includes 1 Year
Membership)

Booth Fee includes display space, table, 2 chairs,
tablecloth, and exhibitor ribbons.

Electricity available on request, at no additional charge.

Reserve Your Space NOW!

Table Location

1st Choice _____ 2nd Choice _____

- 4' Table 8' Table

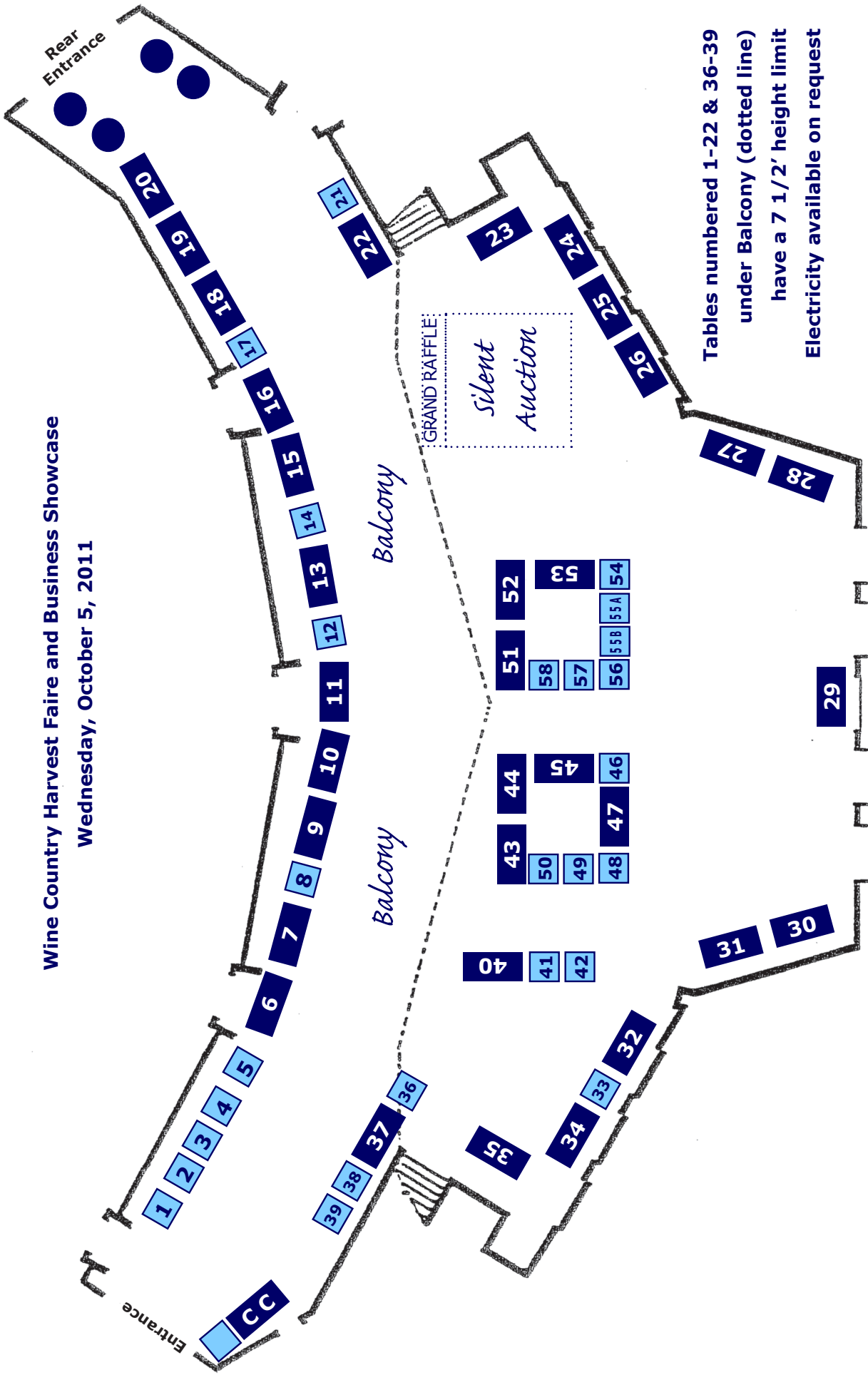
- Check if table not needed
(see back for height restrictions)

YES, I will donate to the Silent Auction:
item _____ value \$ _____

Corporate Sponsorships Available.
Ask for Details.

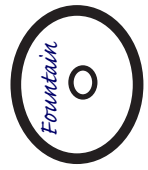
Mail: MWACC, 4787 Old Redwood Hwy, Suite 101, Santa Rosa, CA 95403 FAX: 707 578-0397

Wine Country Harvest Faire and Business Showcase
Wednesday, October 5, 2011



Tables numbered 1-22 & 36-39
 under Balcony (dotted line)
 have a 7 1/2' height limit
 Electricity available on request

4' table
 8' table



Patio

Patio